

# LIEBERT® ICOM

## Embedded Unity Setup Guide



This guide assists you with enabling and configuring the iCOM controller for the Building Management System (BMS) connectivity.

**NOTE:** This setup guide applies only to units with iCOM internal control boards with dual-Ethernet ports.

### 1. Connecting to the network

Inside the iCOM enclosure, connect an Ethernet cable to the P74 port on the iCOM internal control board.

### 2. Making an RS-485 connection

Locate the serial cable from the BMS and connect it to the 485 2-wire terminal connector via the TB3 on the iCOM internal control board. Pin 1 is the positive terminal on the right of the connector.

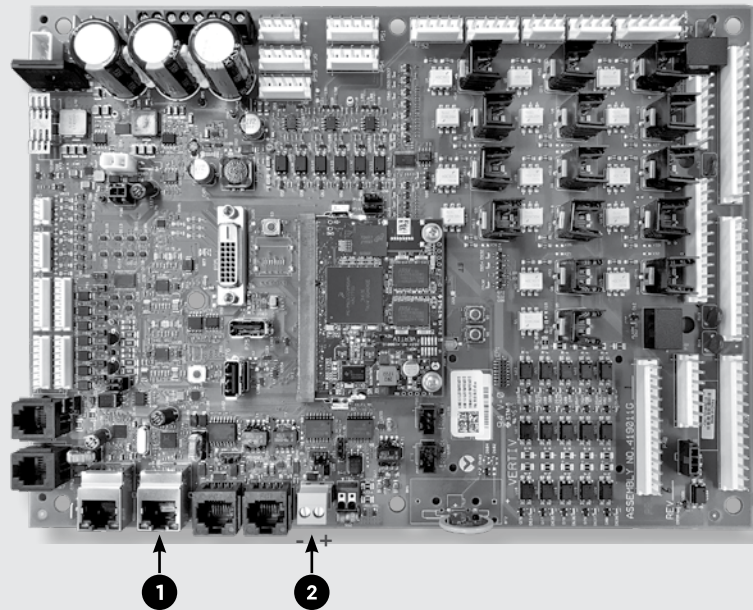
### 3. Enabling Embedded Unity via the iCOM display

By default, the built-in Unity functionality is disabled. To enable it, complete the following steps.

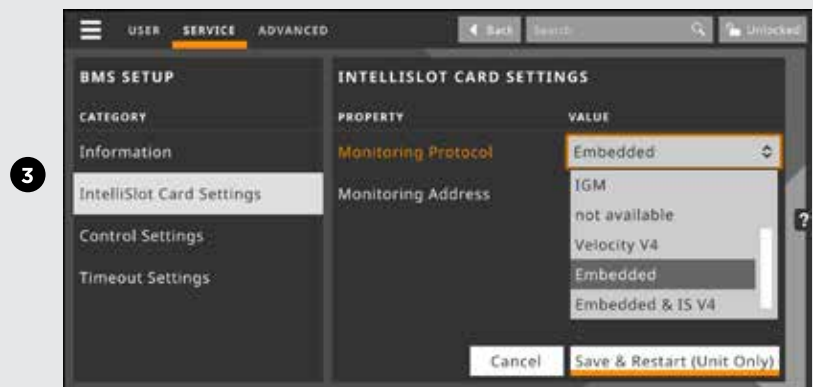
- From the sidebar of the Service menu, navigate to *BMS & Teamwork Setup - BMS Setup - IntelliSlot Card Settings*.
- From the Monitoring Protocol drop-down menu, scroll down and select *Embedded* if you are using only Embedded Unity or select *Embedded & IS V4* if you are using Embedded Unity and additional IntelliSlot capability or SiteLink connection.

**NOTE:** Using *Embedded & IS4* means an optional IntelliSlot assembly and IntelliSlot IS-Unity card is installed. *Embedded Unity* will require a 485 expansion card if twisted pair protocols are used.

Internal Control Board Connections



iCOM Service Screen



- Click *Save & Restart (Unit Only)* to save your changes and restart the unit.

**NOTE:** Changing the monitoring protocol requires a reboot of the iCOM controller. During this time, the unit will not condition the space. After the iCOM controller has

rebooted, it may take at least three more minutes for Embedded Unity to fully reboot. If it doesn't reboot, click *Refresh* from the *BMS & Teamwork Setup-IS-Unity Setup* page of the Service menu.

#### 4. Verifying the username and password

The Embedded Unity service requires a username and password to authenticate any configuration change. The iCOM controller stores a username/password for all configuration changes. The stored username/password must match that of a user account with the Embedded Unity service.

By default, the username/password is Liebert/Liebert. If you are using the default combination, no changes are necessary. If Embedded Unity is configured with a non-default user, you must modify the iCOM controller to match. To modify the username/password, from the Service menu navigate to *BMS & Teamwork Setup - IS-Unity Settings*.

#### 5. Browsing network settings

Once the Embedded Unity service is running, you can view the running BMS network information. This is especially useful to obtain the IP address when DHCP is enabled. From the Service menu, navigate to *BMS & Teamwork Settings - IS-Unity Setup - Support - Active Networking*.

#### 6. Configuring Embedded Unity for BMS connectivity

From the Service menu, navigate to *BMS & Teamwork Settings - IS-Unity Setup - Configuration - Network - IPv4*.

- Click *enabled* and enter the required network information.
- Click *Save* then click *Close*.
- A dialog appears stating the IS-Unity must be restarted. Click *Restart IS-Unity*. The settings take affect when Embedded Unity restarts.

#### 7. Connecting to the Unity web UI

In addition to the iCOM display, Embedded Unity supports the standard Unity web user interface (UI) for Unity configuration. Perform the following steps to connect to the Unity web UI.

- Connect a laptop to the BMS network.
- Obtain the Embedded Unity IP address from the iCOM display. See Step 5.
- Open a web browser on the connected laptop and enter the IP address.

**NOTE:** You can connect a laptop using its direct Link Local Address (LLA). Using an Ethernet cable, connect your laptop to the P74 port on the iCOM control board. Your laptop will automatically negotiate the LLA communication settings. In a web browser, navigate to the Unity LLA IP address: 169.254.24.7. For more information, see the Liebert Unity Card Quick Installation Guide.

#### TROUBLESHOOTING

For further assistance setting up the Embedded Unity service, see the on-board help. Click the ? on the right side of the web UI to open the Help menu and search for **Unity** from the iCOM Help Search bar.

To contact Vertiv Technical Support: visit [www.VertivCo.com](http://www.VertivCo.com)

© 2018 Vertiv Co. All rights reserved. Vertiv and the Vertiv logo are trademarks or registered trademarks of Vertiv Co. All other names and logos referred to are trade names, trademarks or registered trademarks of their respective owners. While every precaution has been taken to ensure accuracy and completeness herein, Vertiv Co. assumes no responsibility, and disclaims all liability, for damages resulting from use of this information or for any errors or omissions. Specifications are subject to change without notice.

